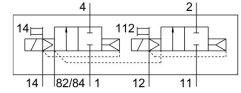
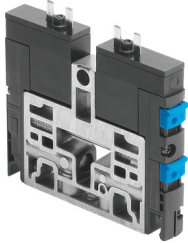


# Air solenoid valve

## CPV10-M1H-2X2-GLS-M7-B-EX

FESTO

Part number: 550701



### Data sheet

Feature	Value
Valve function	2x2/2 closed, monostable
Actuation type	Electrical
Valve size	10 mm
Standard nominal flow rate	400 l/min
Pneumatic working port	M7
Operating voltage	24V DC
Operating pressure	0 bar ... 10 bar
Structural design	Piston gate valve
Reset method	Pneumatic spring
Degree of protection	IP50
Nominal width	4 mm
Type code	CPV10-EX
Exhaust air function	Without flow control option
Sealing principle	Soft
Mounting position	Any
Manual override	Detenting Non-detenting
Type of control	Pilot-controlled
Pilot air supply port	External Internal
Flow direction	Non-reversible
Symbol	00991801
Lap	Overlap
Pilot pressure	3 bar ... 8 bar
b-value	0.35
C value	1.6 l/sbar
Switching time off	17 ms
On switching time	15 ms
Duty cycle	100% in combination with holding current reduction
Required current consumption	0.016 A
Max. input power $P_i$	0.76 W
Max. input voltage $V_i$	32 V
Max. input current $I_i$	0.2 A
Effective internal inductance $L_i$	Negligibly low
Effective internal capacitance $C_i$	Negligibly low
Operating medium	Compressed air as per ISO 8573-1:2010 [7:4:4]

Feature	Value
Information on operating and pilot media	Operation with oil lubrication possible (required for further use)
Corrosion resistance class (CRC)	2 - Moderate corrosion stress
Storage temperature	-20 °C ... 40 °C
Temperature of medium	-5 °C ... 50 °C
Ambient temperature	-5 °C ... 50 °C
Product weight	70 g
Type of mounting	With through-hole
Pilot air port 12/14	Common port
Pilot exhaust air port 82/84	Common port
Pneumatic connection 1	Common port
Pneumatic connection 11	Common port
Pneumatic connection 2	M7
Pneumatic port 3/5 combined	Common port
Pneumatic connection 4	M7
Note on materials	RoHS-compliant
Seals material	HNBR NBR
Housing material	Die-cast aluminum Brass POM PPS Steel